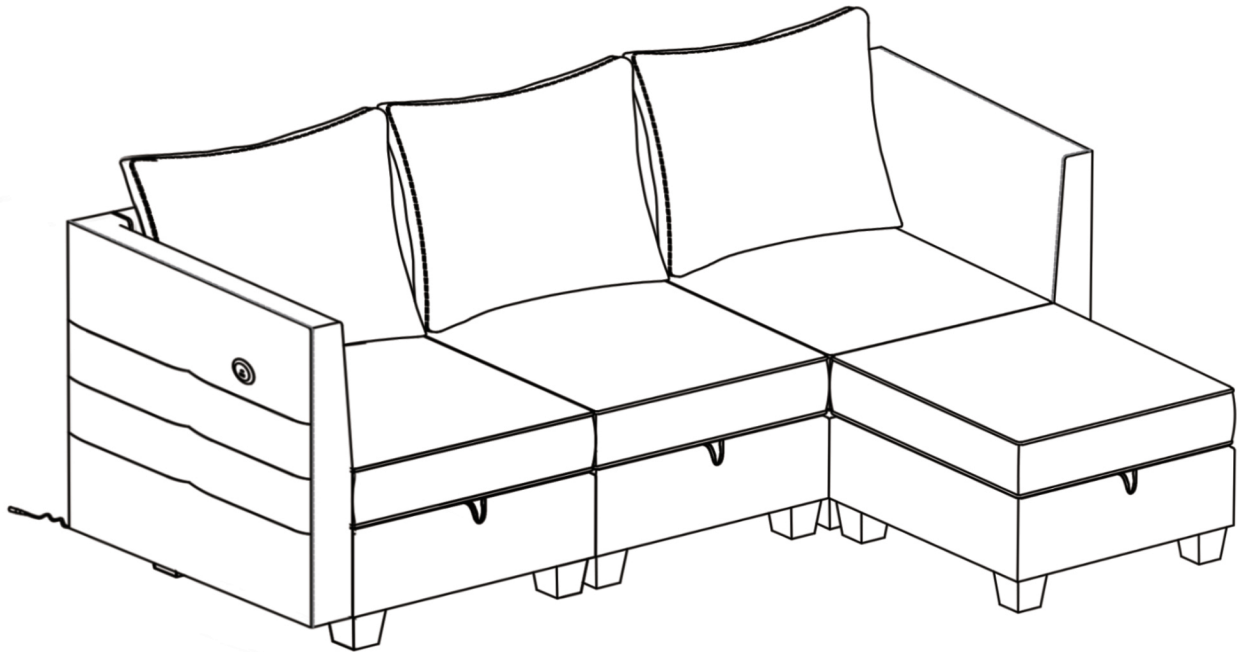

Modular sofa

Assembly Manual

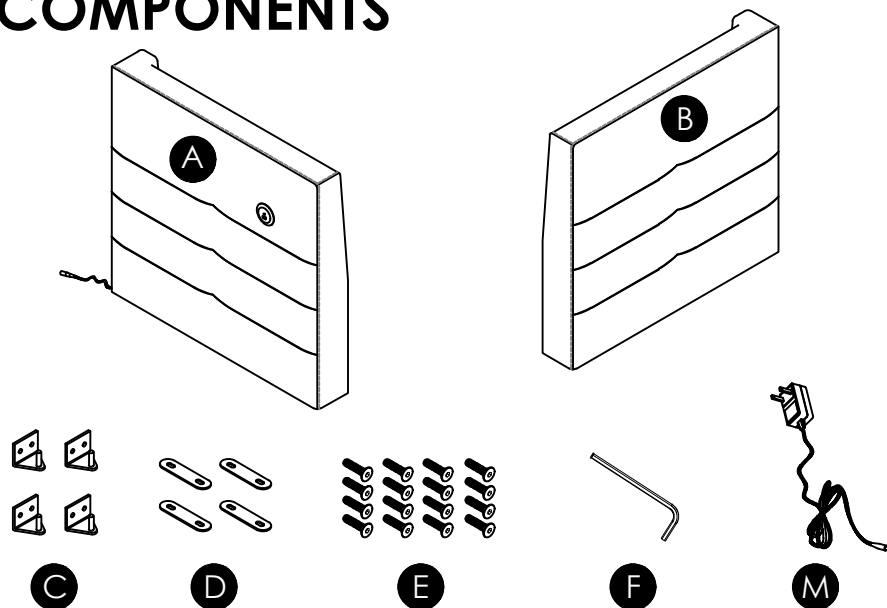
66640-XXX-5P



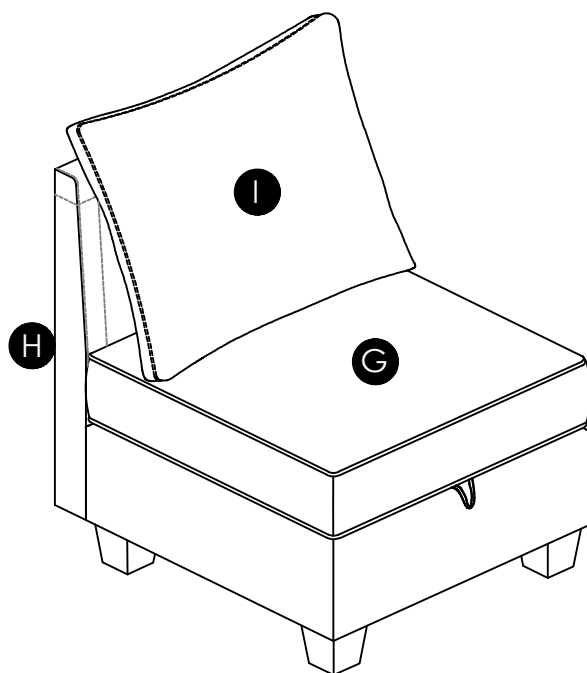
CAUTION

THIS ASSEMBLY MANUAL CONTAINS IMPORTANT SAFETY INFORMATION.
PLEASE READ AND KEEP FOR FUTURE REFERENCE.

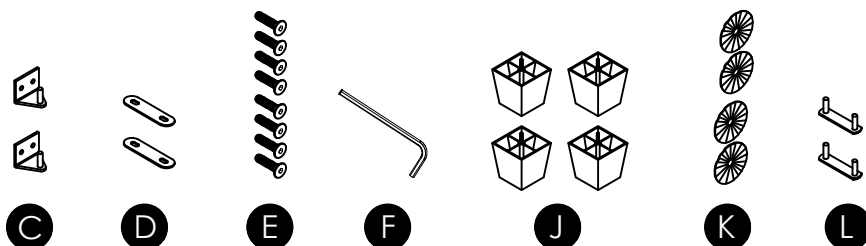
COMPONENTS



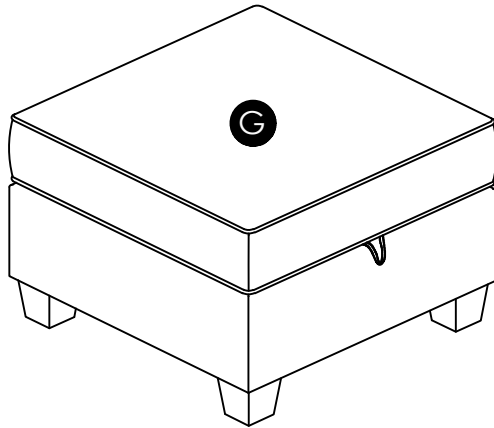
- A** Armrest-Left
1X
- B** Armrest-Right
1X
- C** Hanger
4X
- D** Connector plate
4X
- E** Bolt
16X
- F** Allen Key
1X
- M** Power cord
1X



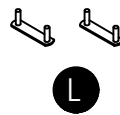
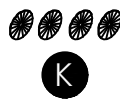
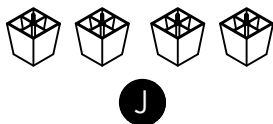
- C** Hanger
2X
- D** Connector plate
2X
- E** Bolt
8X
- F** Allen Key
1X
- G** Seat body
1X
- H** Backrest
1X
- I** Back cushion
1X
- J** Leg
4X
- K** Plastic washer
4X
- L** Connector pin
2X



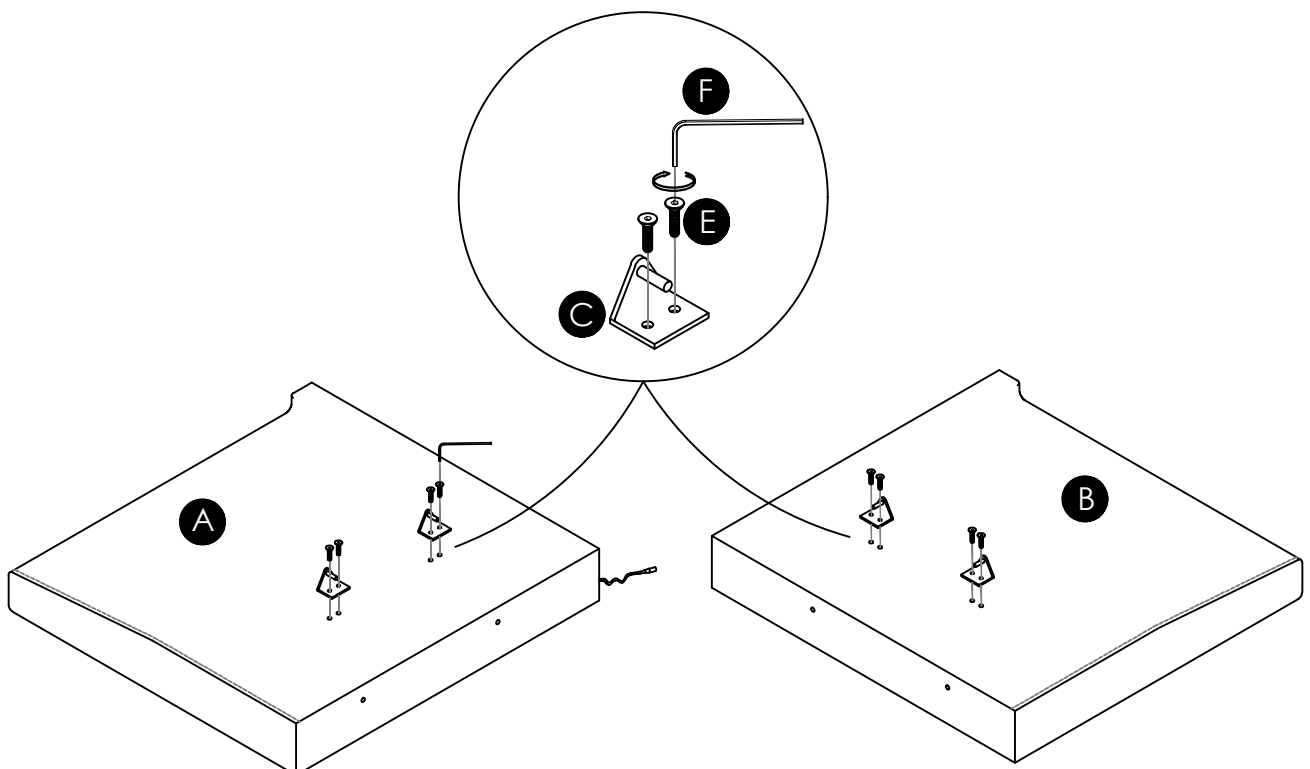
COMPONENTS



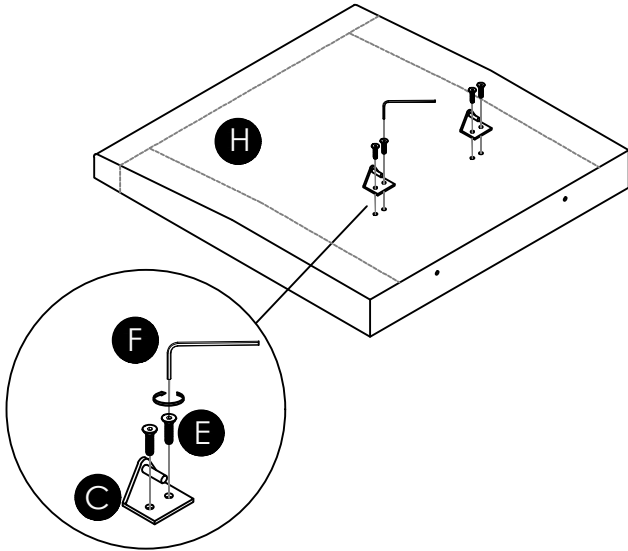
- G** Seat body
1X
- J** Leg
4X
- K** Plastic washer
4X
- L** Connector pin
2X



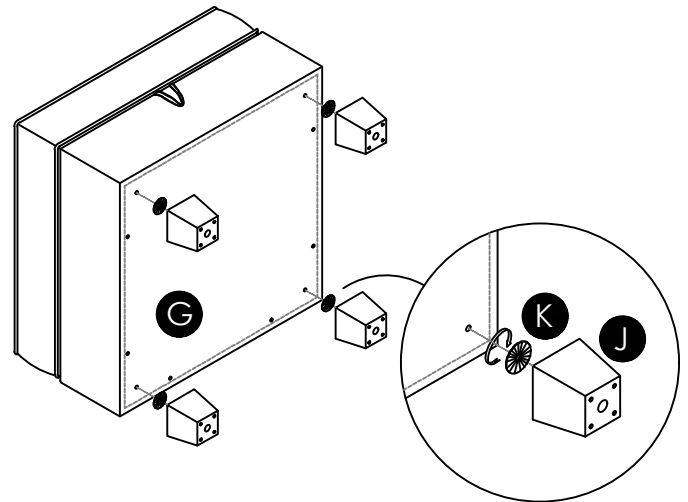
- 1** Install the hanger (C) to the Armrest-Left (A) and Armrest -Right (B) by using the Bolt (E), tighten all bolts by using Allen key (F).



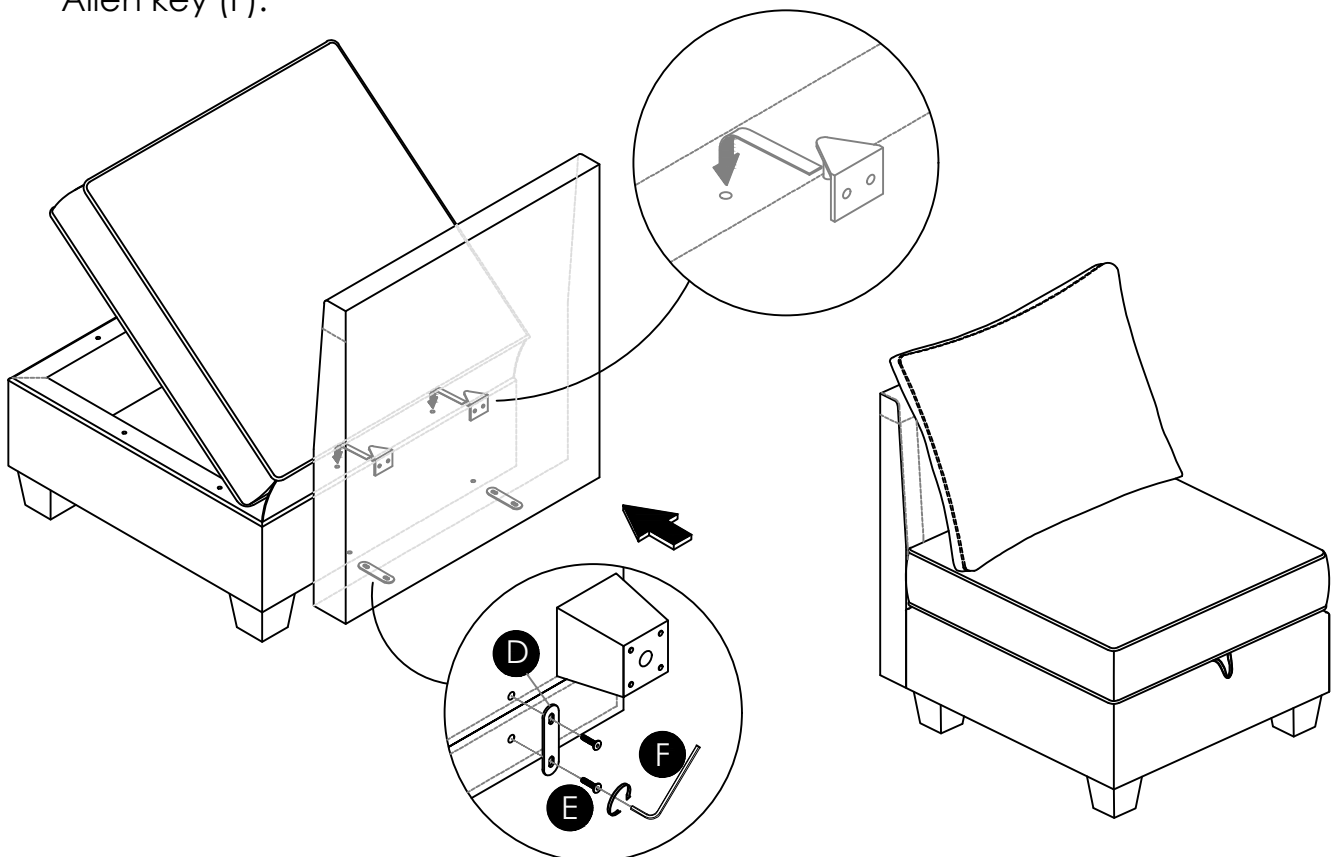
- 2** Install the hanger (C) to the Backrest (H) by using the Bolt (E), tighten all bolts by using Allen key (F).



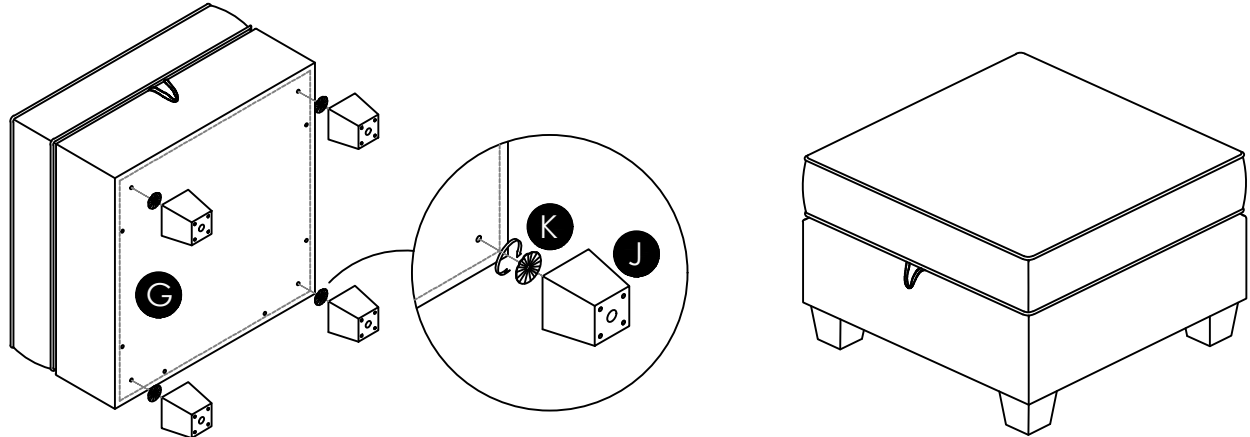
- 3** Install the Leg (J), plastic washer (K) to the Seat body (G) turning them manually.



- 4** Install the Backrest to the seat body by open the seat lid and insert the hanger on the backrest to the hole on the seat body. Then connect the backrest to the seat body by using the Connector plate (D), Bolt (E) and tighten by using Allen key (F).

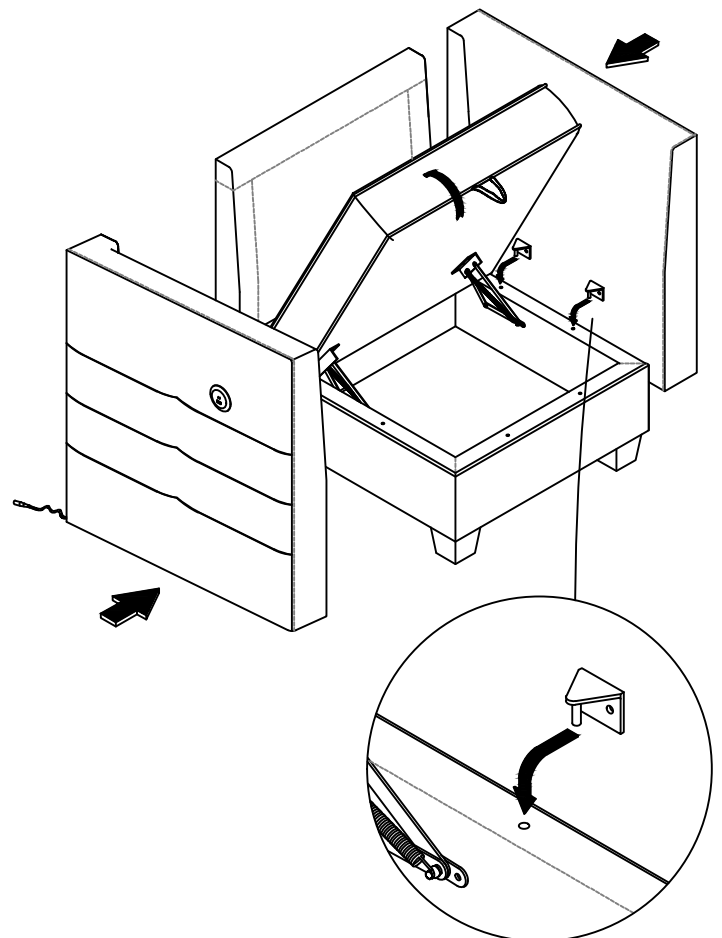
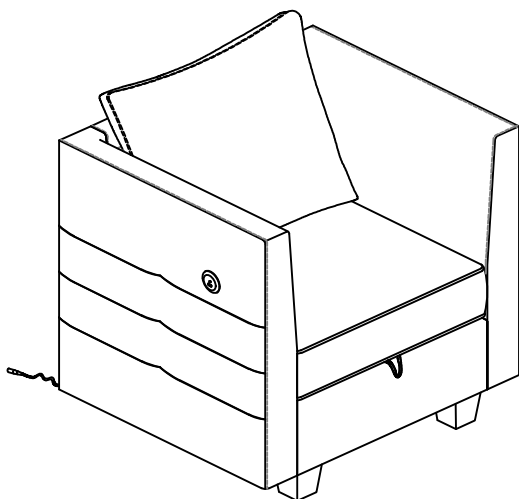


- 5 Install the Leg (J), plastic washer (K) to the Seat body (G) turning them manually.

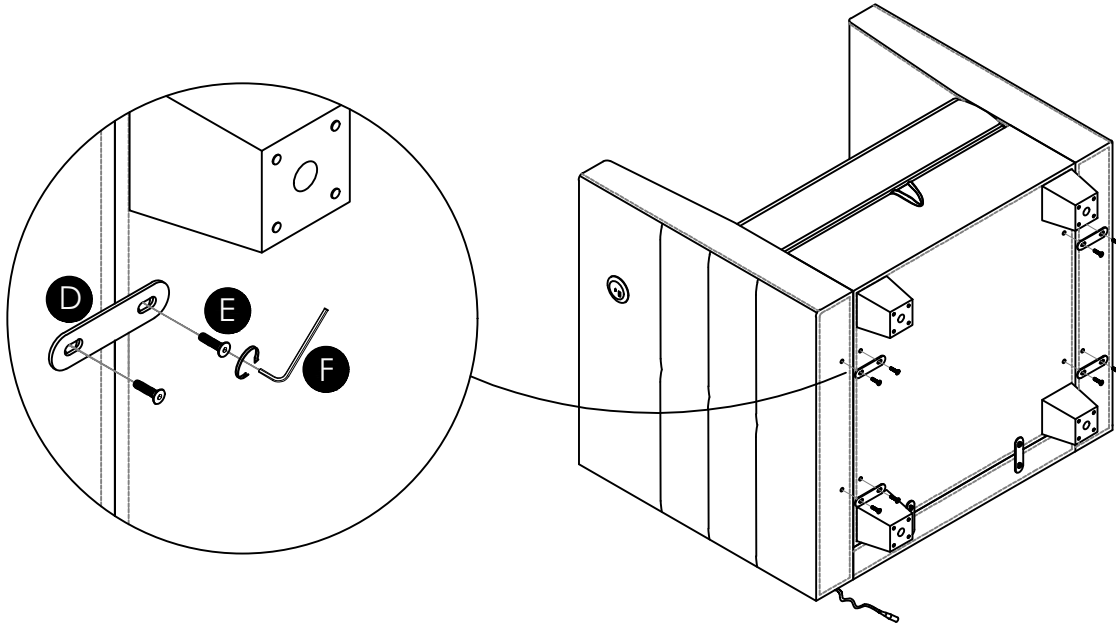


- 6 Install the armrest to the seat body by open the seat lid and insert the hanger on the armrest to the hole on the seat body.

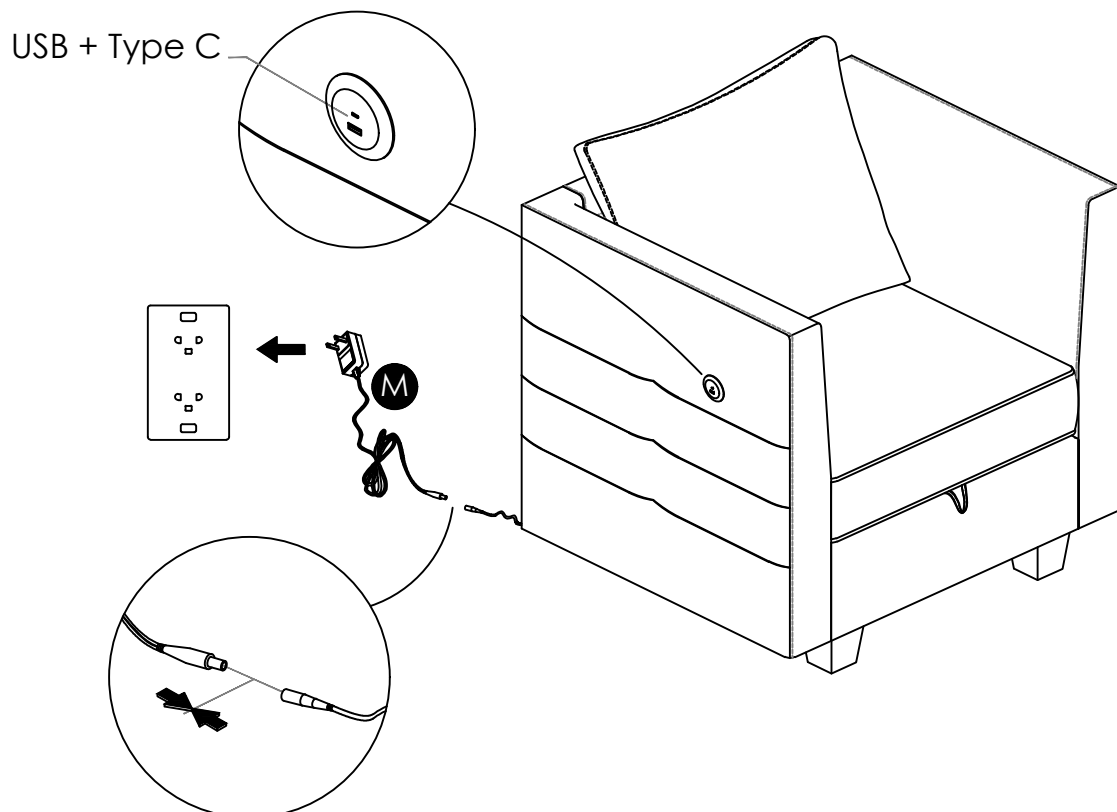
1-PIECE SOFA



- 7 Connect the armrest to the seat body by using the Connector plate (D), Bolt (E) and tighten by using Allen key (F).

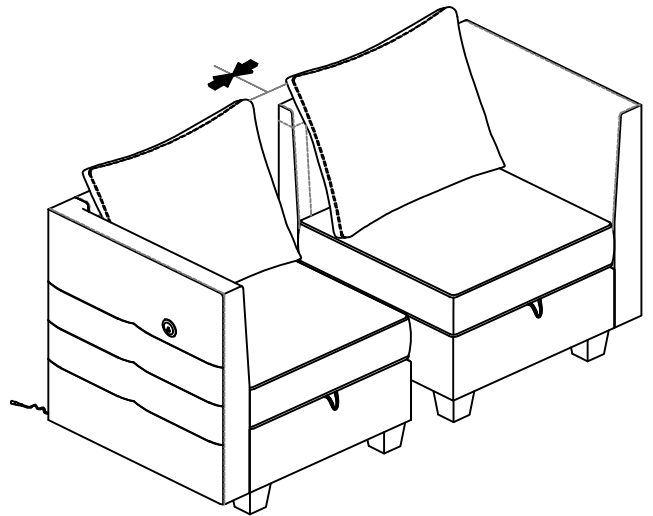
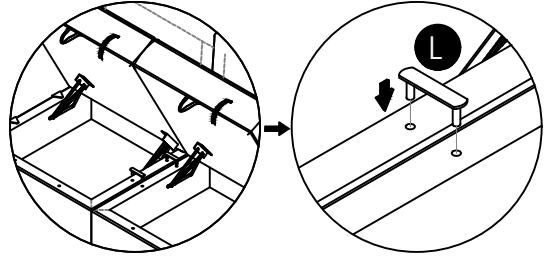
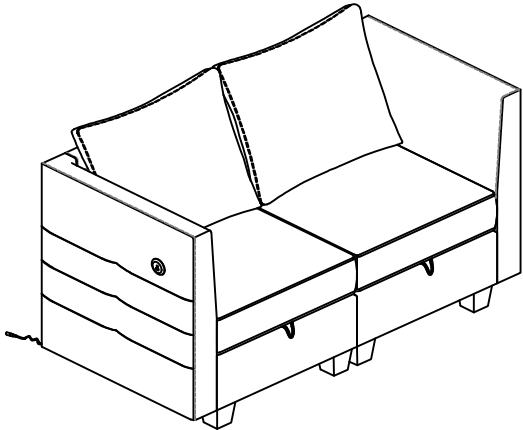


- 8 Connect the plug line (under the armrest) with the Power cord (M), then plug the Power cord into the Power Socket to use the USB + Type C.



- 9 Repeat the previous assembly steps to create different configurations. Connect the seat body by open the seat lid and insert the Connector pin (L) to the hole on the seat body.

2-PIECE SOFA



3-PIECE SOFA

